

# Real Estate Journal

THE LARGEST WEEKLY COMMERCIAL/INVESTMENT NEWSPAPER IN THE WORLD

## Delisle and Messineo of Island Associates reps Western Beef-28,000 s/f

Island Associates has represented Western Beef in leasing 605 Woodfield Center. The subject property consists of 28,000 s/f.

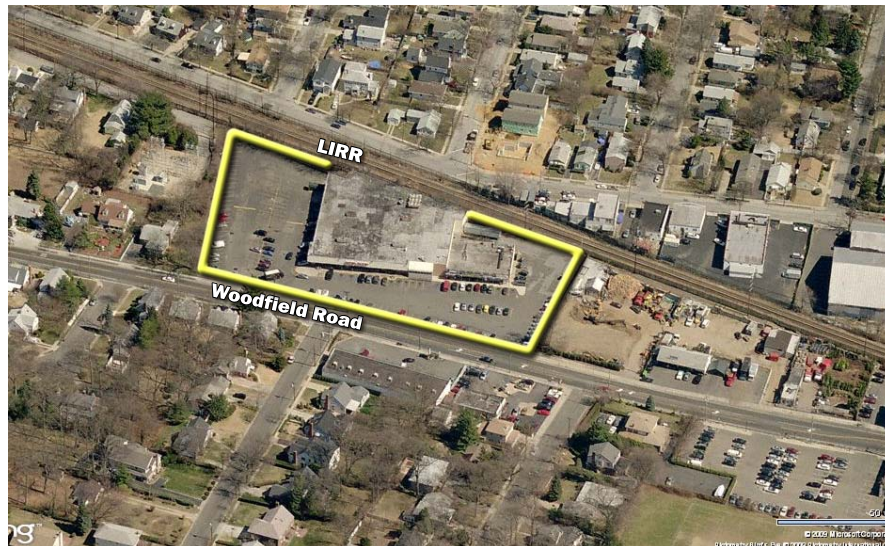
Roger Delisle and John Messineo of Island Associates represented both tenant and landlord in this transaction with aggregate rental of \$4 million.

Island Associates represents Western Beef Supermarkets with over 28 supermarkets in Florida, New York and New Jersey in their new location.

Western Beef opened its first store to the public in 1976 in College Point expanding to over 29 stores.



Roger Delisle, Jr.



605 Woodfield Rd, West Hempstead