

nyrej

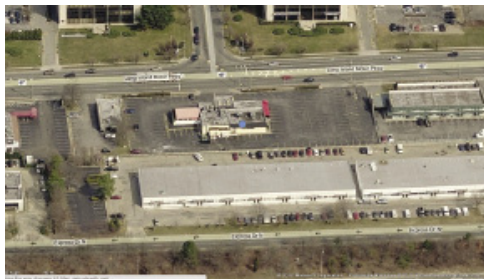
THE LARGEST COMMERCIAL/INVESTMENT NEWSPAPER COVERING THE STATE

Tuesday, February 10, 2015

NYREJ.COM

Reprint

Delisle of Island Associates represents buyer in sale of 6,339 s/f retail property



Aerial of 648 Motor Parkway - Hauppauge, NY

Roger Delisle Jr. CCIM, managing director of Island Associates Real Estate, represented QuickChek in the purchase of a former 6,339 s/f restaurant property located at 648 Motor Pwy. Island Associates has represented QuickChek in multiple site locations on Long Island where traffic count is significant. This site is located at a light on a corner directly across Marcus on Motor Pwy. consisting of 1.4 acres. Tom Retaliatia of Ripco Real Estate represented the seller. The price of the retail property was not disclosed.

QuickChek is a privately owned, family-operated convenience store chain company headquartered in Whitehouse Station, N.J.



Roger Delisle, Jr., Island Associates Real Estate